



OVERVIEW

Riverside Faculty Association

May 15, 2019

CHASS INTS 1111

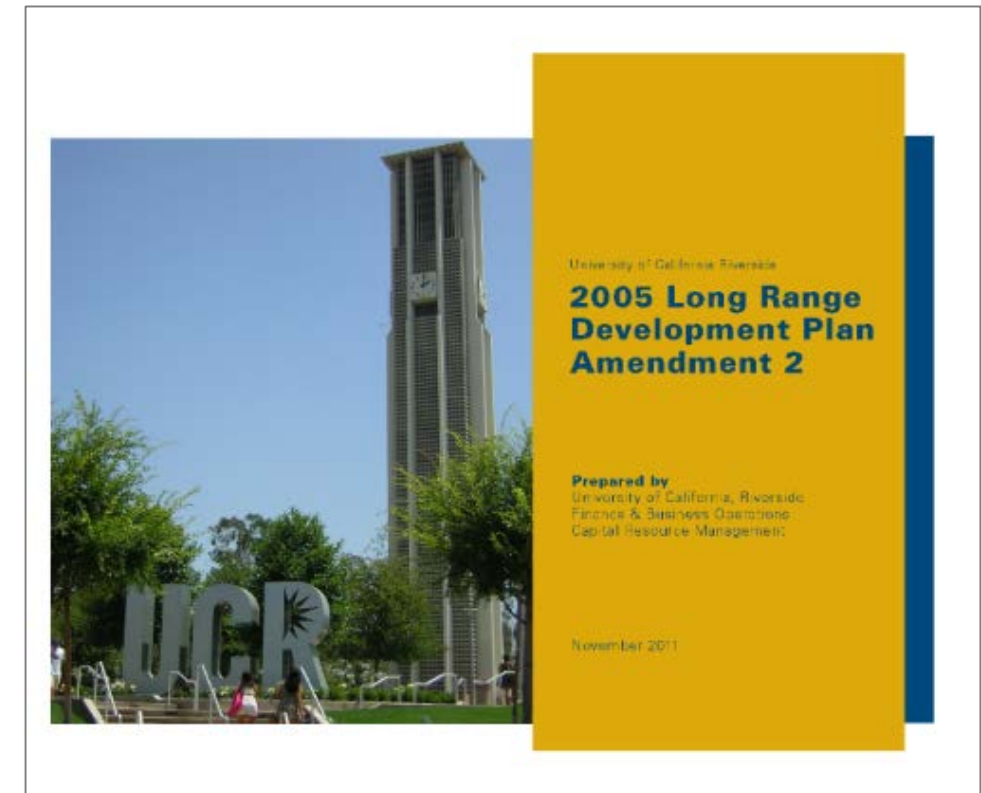
What is a Long Range Development Plan?

It is first important to understand the basic requirements of an LRDP – It looks broadly at the campus growth options (not predictions) and environmental entitlements in order to allow us to take advantage of future expansion opportunities that might come our way.

For example, our current LRDP says we are approved for 25,000 students. We could exceed the 25,000 mark BUT if the state then had funding to give us for new buildings, we would not have the entitlements to accept that funding under the current LRDP. We want to give ourselves the opportunity to grow in the future through this updated LRDP, and be in a position to take advantage of financial opportunities for that growth, but the LRDP is NOT a mandate to grow – we cannot grow if we don't have the operational and capital resources to support that growth.

The LRDP includes major assumptions for growth – like enrollment targets, housing, space needs, parking, etc. and these assumptions are the requirements that then go into the CEQA (California Environmental Quality Act) document and an Environmental Impact Report (EIR) that quantifies the environmental impact of that growth and is a public document distributed for broad input.

The LRDP goes forward to the Board of Regents WITH this EIR and comments from that EIR (from the public), and if it is approved, it gives us those entitlements to grow within those new parameters (again, we can only grow if we have the resources to support that growth, and if we don't have an updated LRDP, it can prevent us from accepting resources, like capital funding, for that growth).



UC Regents certify the LRDP EIR and adopt the LRDP

Why it is needed

The current LRDP in use by the campus was created in 2005 and last updated in 2010, and bases its land use assumptions on a projected maximum population of 25,000 students.

At 24,000 students in Fall 2018, the campus is quickly approaching this important enrollment milestone. It is time to update the LRDP to reflect UC Riverside's current vision regarding enrollment and the physical development necessary to support continued future growth.

The overarching framework established in the 2016 Physical Master Plan Study remains.

The new LRDP planning effort will:

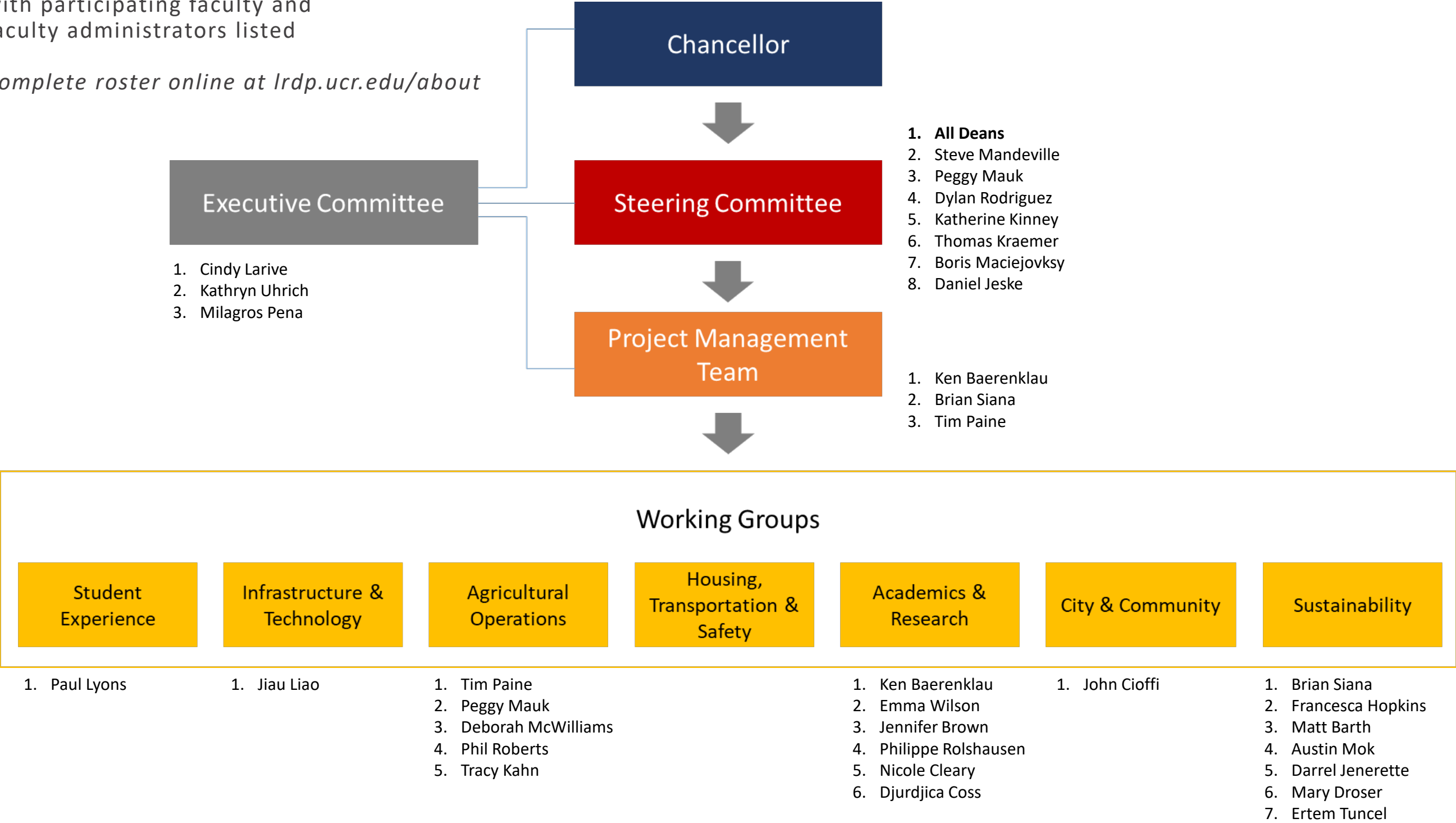
- Expand upon the Physical Master Plan Study vision to a new planning horizon and larger enrollment
- Include planning issues NOT addressed in the 2016 Physical Master Plan Study
 - West Campus land uses
 - Propose land use preferences for campus adjacent land areas
 - Transportation incl. regional transit access



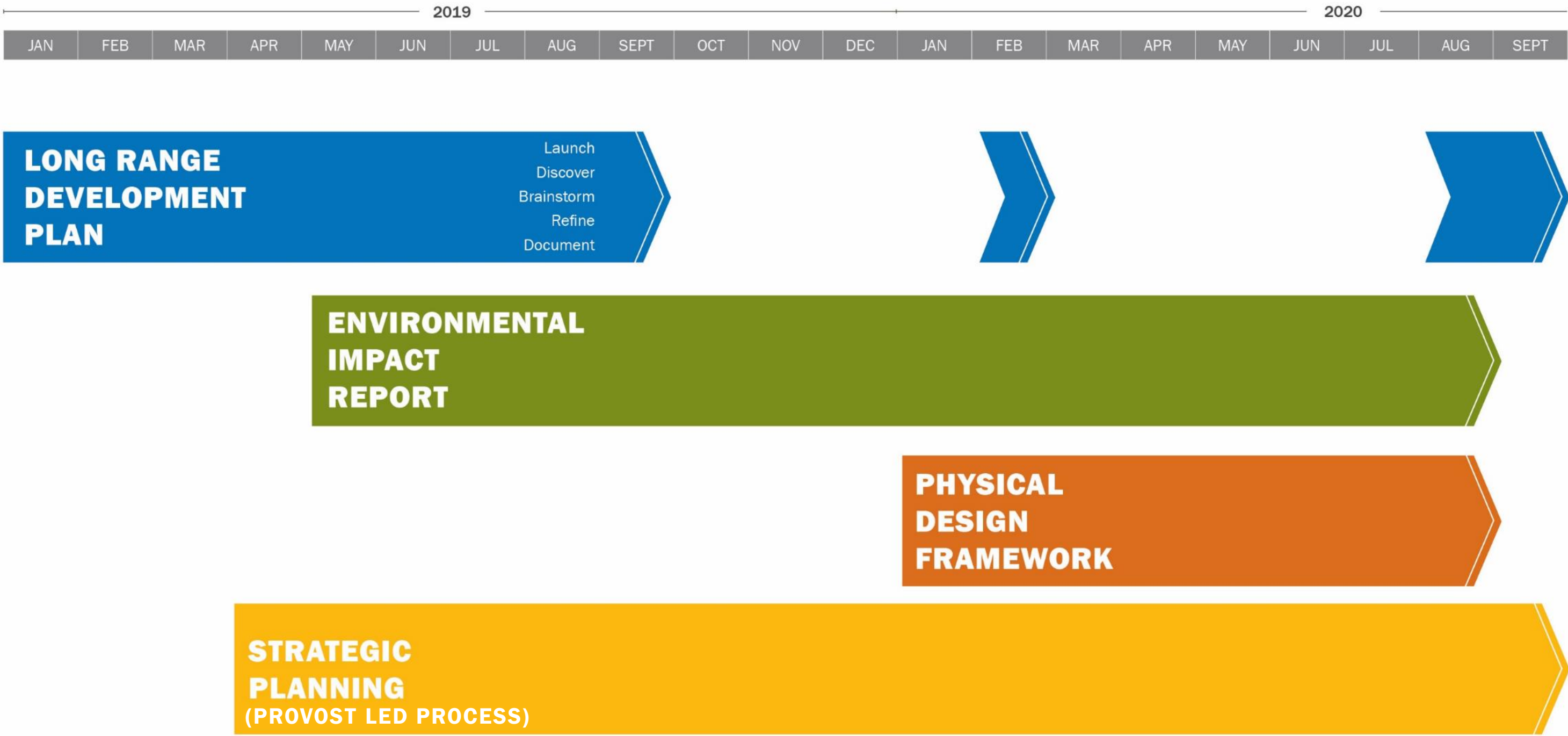
LRDP Governance Structure

with participating faculty and
faculty administrators listed

Complete roster online at lrdp.ucr.edu/about



Timeline



Building the Capacity

Moving In

- Multidisciplinary Research Building

New Housing

- Dundee Housing and Glasgow Dining Hall
- North District Phase 1

Funded

- Student Success Center
- New Student Health Center Building

Future Priorities

- Class Lab. and Teaching Facility
- School of Medicine Education Building
- School of Business Building – Phase 1



Irdp.ucr.edu
Irdp@ucr.edu

LRDP Campus Open Fora

Open Forum 1: May 20, 2019, 12:00 pm to 1.00pm, HUB 302

Open Forum 2: Early Fall Qtr. 2019 (to be announced)